

# The Working Lives and Struggles of Asian Americans and Pacific Islanders in California

## Japanese Americans

### About the Survey

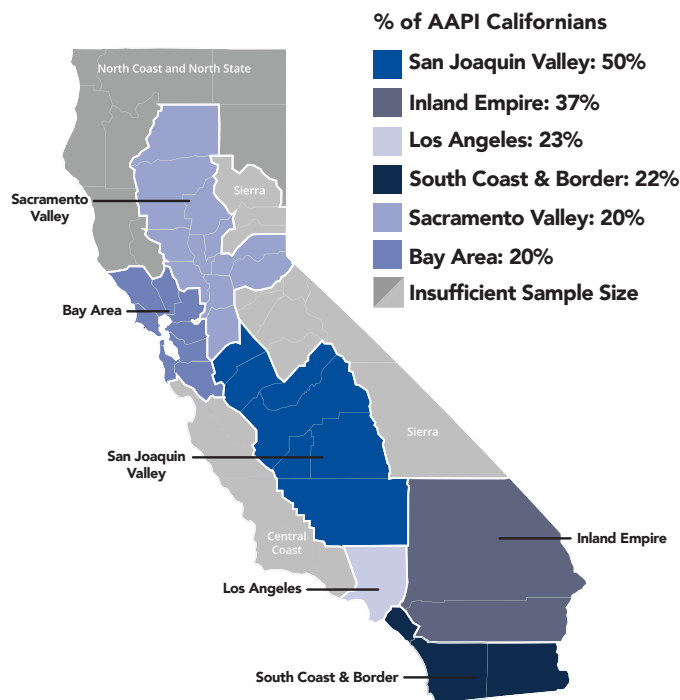
In November 2019, researchers from PRRI and AAPI Data released a landmark report on Asian American and Pacific Islander (AAPI) workers in California. The survey of 2,684 AAPI California residents explored experiences and perspectives of workers, many of whom are struggling with poverty.

Asian Americans and Pacific Islanders are the fastest-growing racial groups (and working-age population) in California and the nation. Between 2010 and 2017, most new immigrants (56%) to California came from Asia.

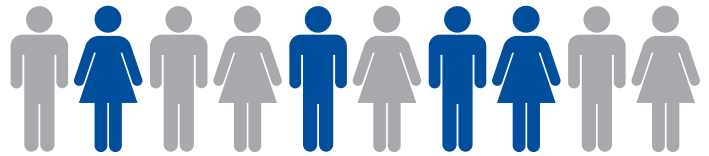
As with other racial and ethnic groups, the research tells the story of “two Californias” — one where some AAPI workers are financially stable and another in which AAPI workers report struggle significantly. This brief highlights key findings relevant to Japanese American workers in California from the full report.

### AAPI California Workers Struggling with Poverty Within Each Region

In California, the highest proportion of Japanese American adults reside in Los Angeles County (36%) and the Bay Area (25%).

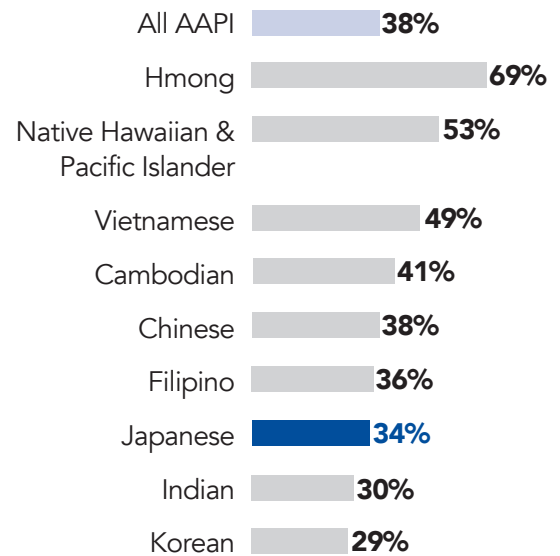


### Key Findings



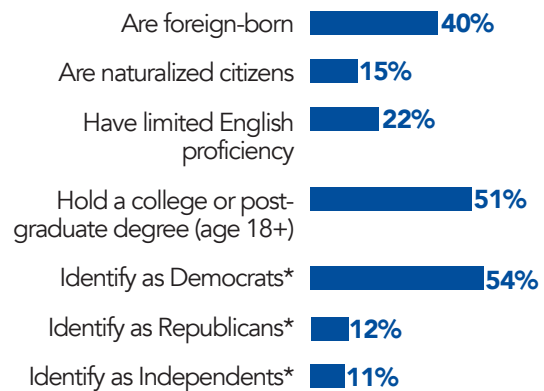
Nearly **FOUR IN 10** AAPI workers in California are struggling with poverty.

### AAPI Workers Struggling with Poverty



### Snapshot of Japanese Americans in California

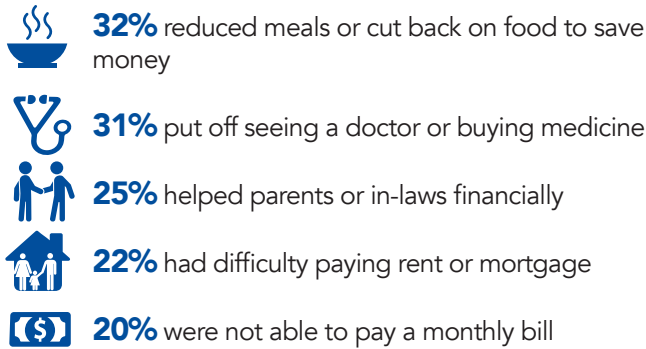
From the Census Bureau's American Community Survey:



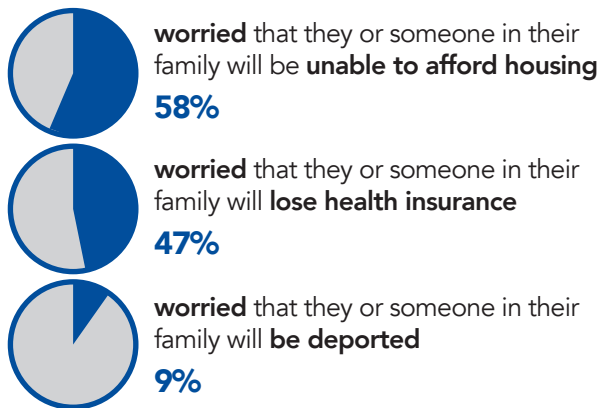
\*From the PRRI/AAPI survey

## Economic Hardships and Concerns

Share of Japanese American workers in California who experienced hardships in the past 12 months:



Share of Japanese American workers in California who are:



## Views on the American Dream and Economic Mobility Among Japanese Americans in California

**45%** still believe in the American Dream (if you work hard, you'll get ahead), compared to 62% of all AAPI Californians.

**26%** of struggling Japanese American workers in California believe in the American Dream.

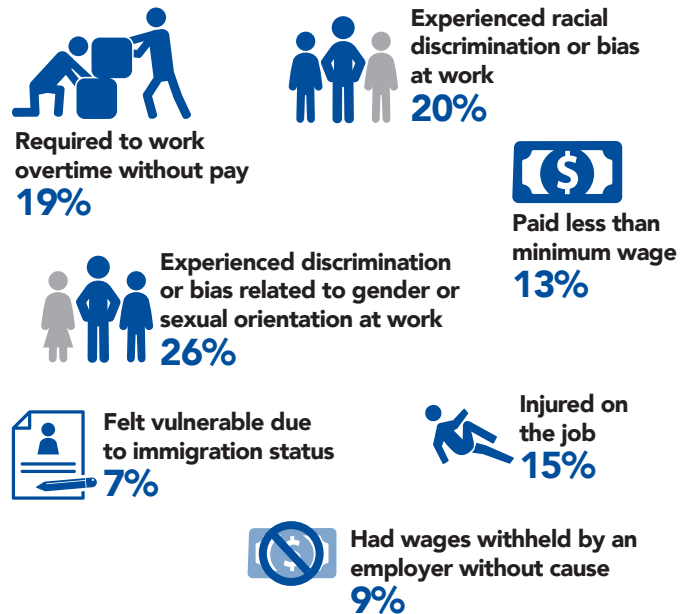
**44%** believe it is harder to achieve the American Dream here than in other states.

**38%** would encourage young people to leave their community for better opportunities.

**58%** agree that hard work is not a guarantee of success, compared to 55% of all AAPI Californians.

## Hardships on the Job

Share of Japanese American workers in California who said they or someone in their household experienced the following in the past 12 months:



## Views on the Economy, Employers, and Policymakers

Share of Japanese American workers in California believe that:

The U.S. economy unfairly favors the wealthy **81%**

Public officials do not care what they think **68%**

Employers generally see them as replaceable **69%**

It is important to organize so that employers do not take advantage of them **74%**

For more data and survey methodology, please see the full report, in English, at: [irvine.org/learning/aapi](http://irvine.org/learning/aapi)