

# The Working Lives and Struggles of Asian Americans and Pacific Islanders in California

## Hmong Americans

### About the Survey

In November 2019, researchers from PRRI and AAPI Data released a landmark report on Asian American and Pacific Islander (AAPI) workers in California. The survey of 2,684 AAPI California residents explored experiences and perspectives of workers, many of whom are struggling with poverty.

Asian Americans and Pacific Islanders are the fastest-growing racial groups (and working-age population) in California and the nation. Between 2010 and 2017, most new immigrants (56%) to California came from Asia.

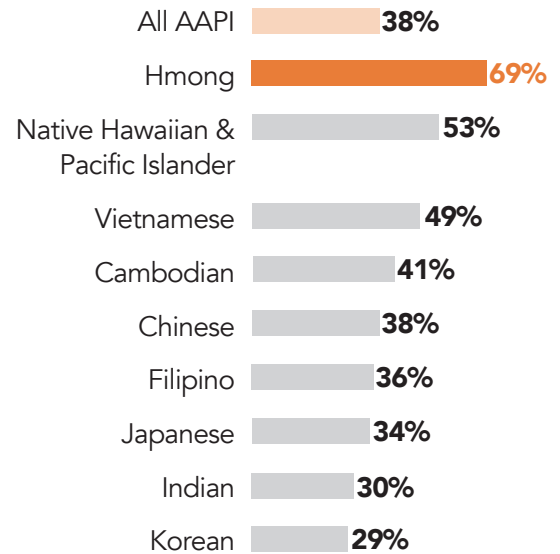
As with other racial and ethnic groups, the research tells the story of “two Californias” — one where some AAPI workers are financially stable and another in which AAPI workers report struggle significantly. This brief highlights key findings relevant to Hmong American workers in California from the full report.

### Key Findings



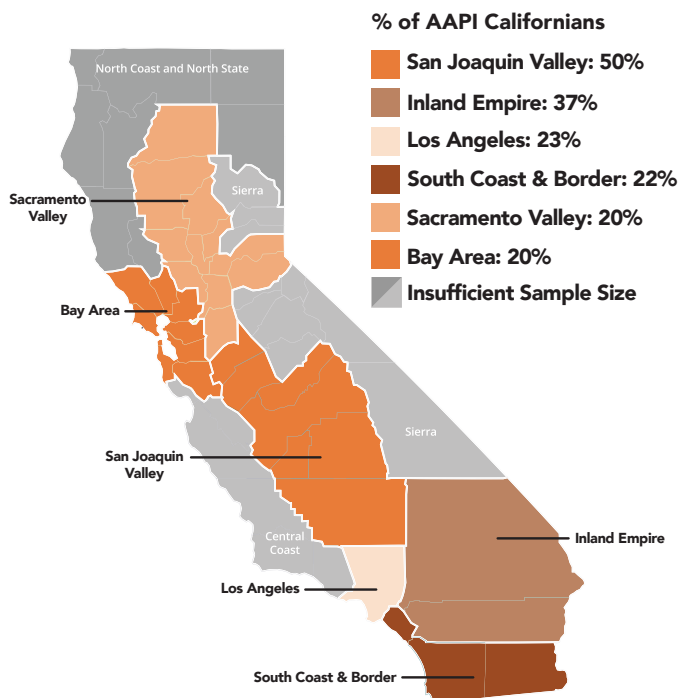
Nearly **FOUR IN 10 AAPI** workers in California are struggling with poverty.

### AAPI Workers Struggling with Poverty



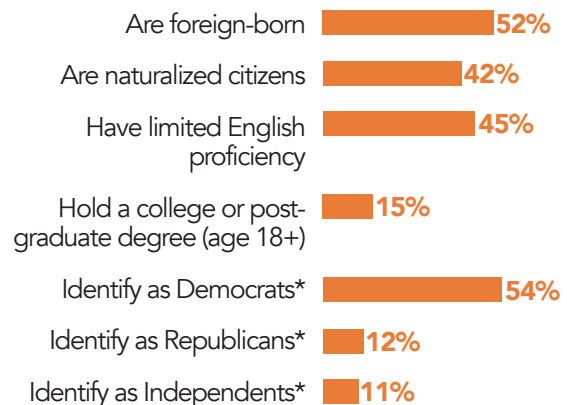
### AAPI California Workers Struggling with Poverty Within Each Region

In California, the highest proportion of Hmong American adults reside in the Central Valley (83%).



### Snapshot of Hmong Americans in California

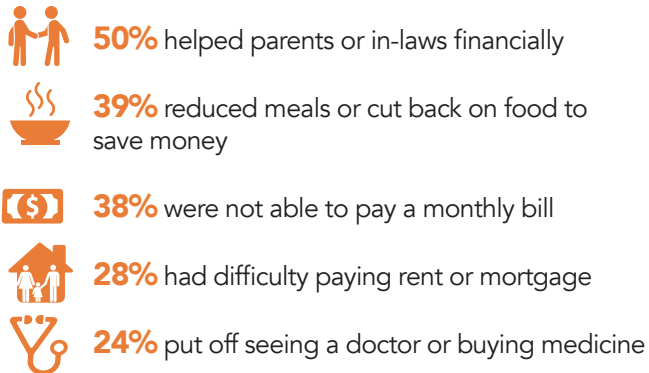
From the Census Bureau’s American Community Survey:



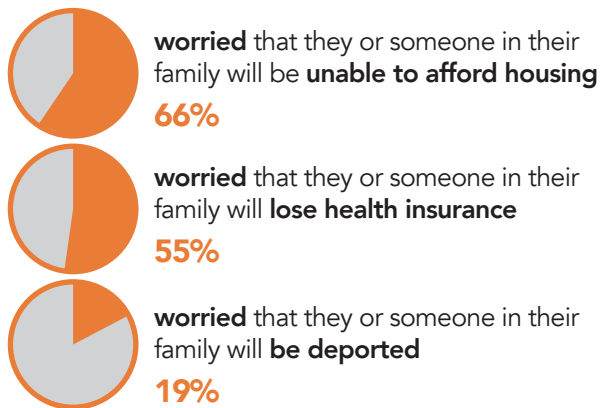
\*From the PRRI/AAPI survey

## Economic Hardships and Concerns

Share of Hmong American workers in California who experienced hardships in the past 12 months:



Share of Hmong American workers in California who are:



## Views on the American Dream and Economic Mobility Among Hmong Americans in California

**53%** still believe in the American Dream (if you work hard, you'll get ahead), compared to 62% of all AAPI Californians.

**55%** of struggling Hmong American workers in California believe in the American Dream.

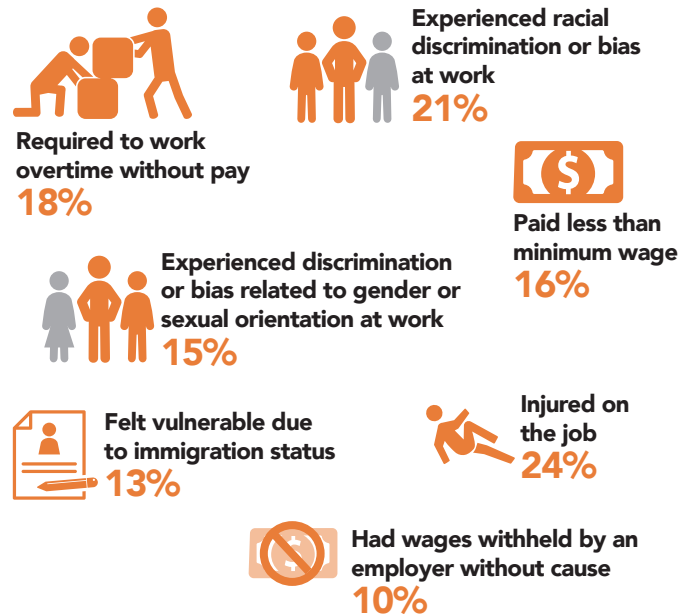
**36%** believe it is harder to achieve the American Dream here than in other states.

**44%** would encourage young people to leave their community for better opportunities.

**54%** agree that hard work is not a guarantee of success, compared to 55% of all AAPI Californians.

## Hardships on the Job

Share of Hmong American workers in California who said they or someone in their household experienced the following in the past 12 months:



## Views on the Economy, Employers, and Policymakers

Share of Hmong American workers in California believe that:

The U.S. economy unfairly favors the wealthy **78%**

Public officials do not care what they think **63%**

Employers generally see them as replaceable **67%**

It is important to organize so that employers do not take advantage of them **81%**

For more data and survey methodology, please see the full report, in English, at: [irvine.org/learning/aapi](http://irvine.org/learning/aapi)

**Cov Neeg Esxias Asmeskas Thiab Neeg Povtxwv Pacific Hauv California Lub Neej Khwv Noj Khwv HausThiab Cov Teeb Meem Ntxhov Siab**

**Hmoob Asmeskas**

**Hais Txog Txoj Kev Tshawb Txheeb**

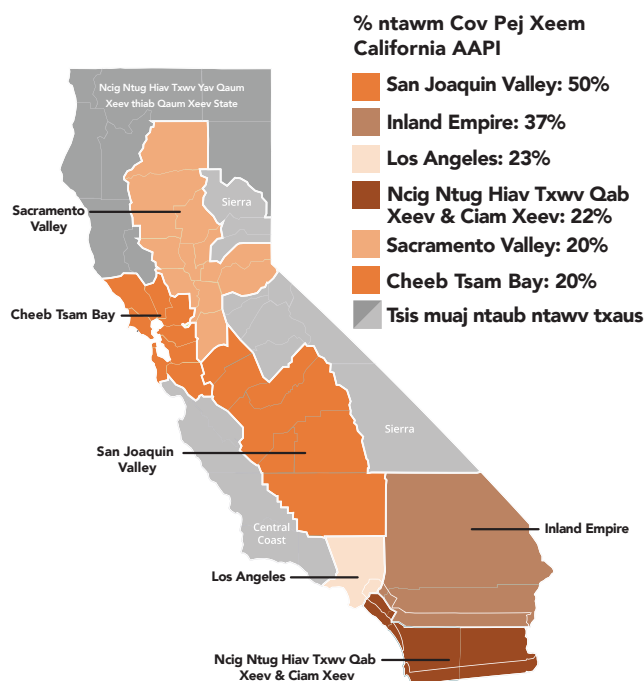
Nyob rau lub Kaum Ib Hlis 2019, cov kws tshawb fawb ntawm PRRI thiab AAPI Data tau tshaj tawm txog cov Neeg Esxias Asmeskas thiab Neeg Povtxwv Pacific (AAPI) ua hauj lwm nyob rau hauv California. Txoj kev tshawb txheeb ntawm 2,684 tus neeg pej xeeb California AAPI cov kev nrhiv paub txog thiab kev xav ntawm cov neeg ua hauj lwm, uas ntau tus tau muaj teeb meem ntxhov siab kev txom nyem.

Cov Neeg Esxias Asmeskas thiab cov Neeg Pov Txwv Pacific yog cov pab pawg neeg muaj coob zuj zus ceev tshaj (thiab cov pej xeeb muaj hnub nyooog ua tau hauj lwm) hauv California thiab hauv lub teb chaws. Thaum xyoo 2010 mus txog 2017, feem neeg khiav tawm teb chaws tshiab coob tshaj (56%) tuaj rau hauv California yog tuaj sab Esxia tuaj.

Zoo xws li lwm haiv neeg thiab hom neeg, txoj kev tshawb fawb qhia zaj keebkwm txog "ob lub California" - uas ib lub ces yog cov neeg AAPI ua hauj lwm khwv muaj nyiaj muaj txiaj ruaj ntseg thiab ib lub ces yog cov neeg AAPI ua hauj lwm qhia txog kev ntxhov siab ntxhov plawv loj heev. Tsab ntawv nthuav qhia me ntsis no yuav qhia txog cov kev tshawb pom muaj feem xyuam rau cov Hmoob Asmeskas ua hauj lwm nyob rau hauv California ntawm tsab ntawv ciaj luam txhij txhua (the full report).

**AAPI Cov Neeg Ua Hauj Lwm Muaj Teeb Meem Ntxhov Siab Kev Txom Nyem Hauv Ib Cheeb Tsam Zus**

Nyob rau hauv California, feem neeg Hmoob Asmeskas laus nyob rau hauv Central Valley (83%).

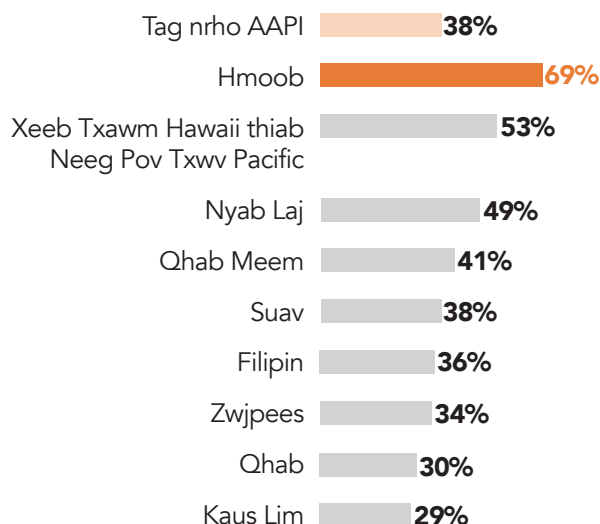


**Cov Ntsiab Tshawb Pom**



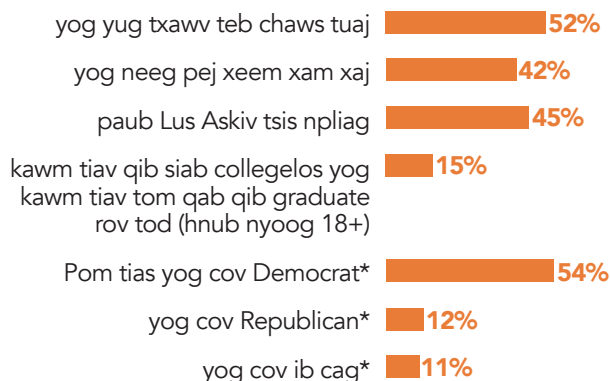
**Ze li ntawm plaub tug ntawm 10 tus neeg AAPI ua hauj lwm hauv California muaj teeb meem ntxhov siab kev txom nyem.**

**AAPI Cov Neeg Ua Hauj Lwm Muaj Teeb Meem Kev Txom Nyem**



**Saib Ib Muag Txog Cov Neeg Hmoob Asmeskas hauv California:**






Los ntawm Koom Haum Suav Pej Xeeb Txoj Kev Tshawb Txheeb Txog Zej Zog Neeg Asmeskas (American Community Survey):



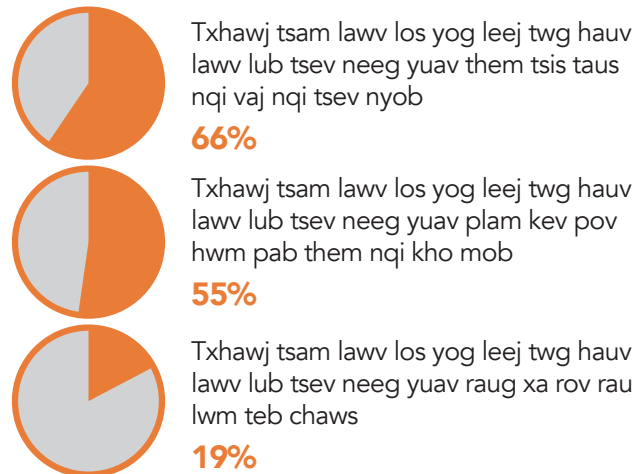
\*los ntawm txoj kev tshawb txheeb PRRI/AAPI

## Cov Kev Khwv Noj Khwv Haus Nyuab thiab Cov Kev Txhawj Xeeb

Feem ntawm cov neeg Hmoob Asmeskas ua hauj lwm hauv California uas tau ntsib kev khwv noj khwv haus nyuab hauv 12 lub hlis dhau los:

-  **50%** pab nyiaj txiaj rau cov niam cov txiv los yog cov niamtais yawmtxiv
-  **39%** txo tsawg cov puas noj los yog yuav khoom noj khoom haus tsawg dua kom txuag tau nyiaj
-  **38%** them tsis taus cov nuj nqis hauv txhua lub hlis
-  **28%** muaj teeb meem them tsis taus nqi khiab tsev nyob los yog nqi txais muas tsev
-  **24%** tsis mus cuag kws kho mob los yog tsis muas tshuaj siv

Feem ntawm cov neeg Hmoob Asmeskas ua hauj lwm hauv California uas:

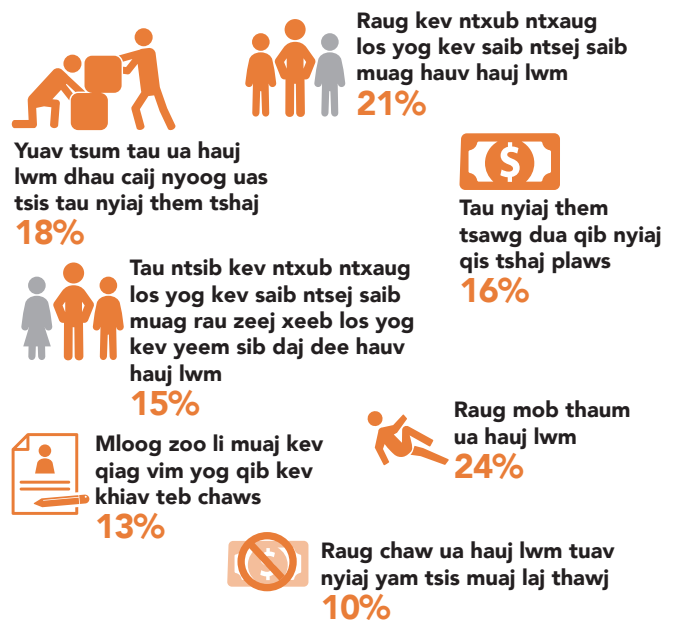


## Xyuas txog Asmeskas Tus Npau Suav thiab Hmoob Asmeskas California Txoj Kev Khwv Noj khwv Haus:

- 53%** yeej tseem ntseeg Asmeskas Tus Npau Suav (yog koj sib zog khwv, koj yeej yuav peem dhau), piv rau 62% ntawm tag nrho cov neeg pej xeeb AAPI hauv California.
- 55%** ntawm cov neeg Hmoob Asmeskas ua hauj lwm hauv California ntseeg Asmeskas Tus Npau Suav.
- 36%** ntseeg tias nyob rau hauv no yuav caum cuag Asmeskas Tus Npau Suab nyuab dua lwm cov xeev.
- 44%** xav txhib kom cov neeg hluas khiav tawm hauv lawv lub zej zog mus cuag cov kev khwv noj khwv haus zoo dua.
- 54%** pom zoo tias txoj kev sib zog khwv yuav tsis ceev meej kom ntsib txoj kev vam meej, muab piv rau 55% ntawm tag nrho cov neeg pej xeeb AAPI hauv California.

## Cov Kev Nyuab ntawm Txoj Hauj Lwm

Feem ntawm cov Neeg Hmoob Asmeskas ua hauj lwm hauv California uas hais tias lawv los yog leej twg hauv lawv lub tsev neeg tau ntsib cov nram qab no hauv 12 lub hlis dhau los:



## Cov Ncuas Muag txog Kev Khwv Noj Khwv Haus, Cov Chaw Hauj Lwm, Cov Tsim Tsa Kev Cai

Feem ntawm cov neeg Hmoob Asmeskas ua hauj lwm hauv California ntseeg tias:

- Teb Chaws Asmeskas kev khwv noj khwv haus coj tsis ncaj vim lawv nyiam cov nplua nuj **78%**
- Cov kws khiav ua nom ua tswv tsis hmov tshua txog lawv cov kev xav **63%**
- Feem ntau cov chaw hauj lwm pom tias muab lawv hloov rau cov tshiab tau **67%**
- Nws tseem ceeb yuav tau muaj paus muaj ntsis kom cov chaw hauj lwm tsis txhob ua tau kev tsis zoo rau lawv **81%**

Xav tau cov ncauj lus ntxiv thiab lub tswv yim lis kev tshawb txheeb, thov mus xyuas tsab ntawv ceeb toom txhij txhua, sau ua Lus Askiv, ntawm: [irvine.org/learning/aapi](http://irvine.org/learning/aapi)